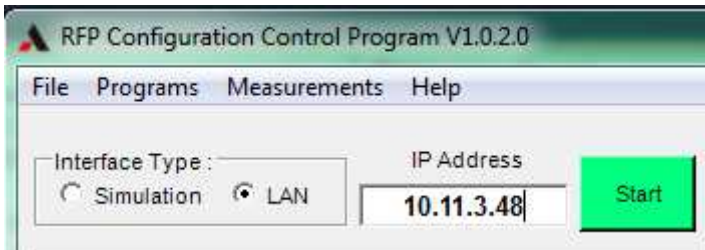
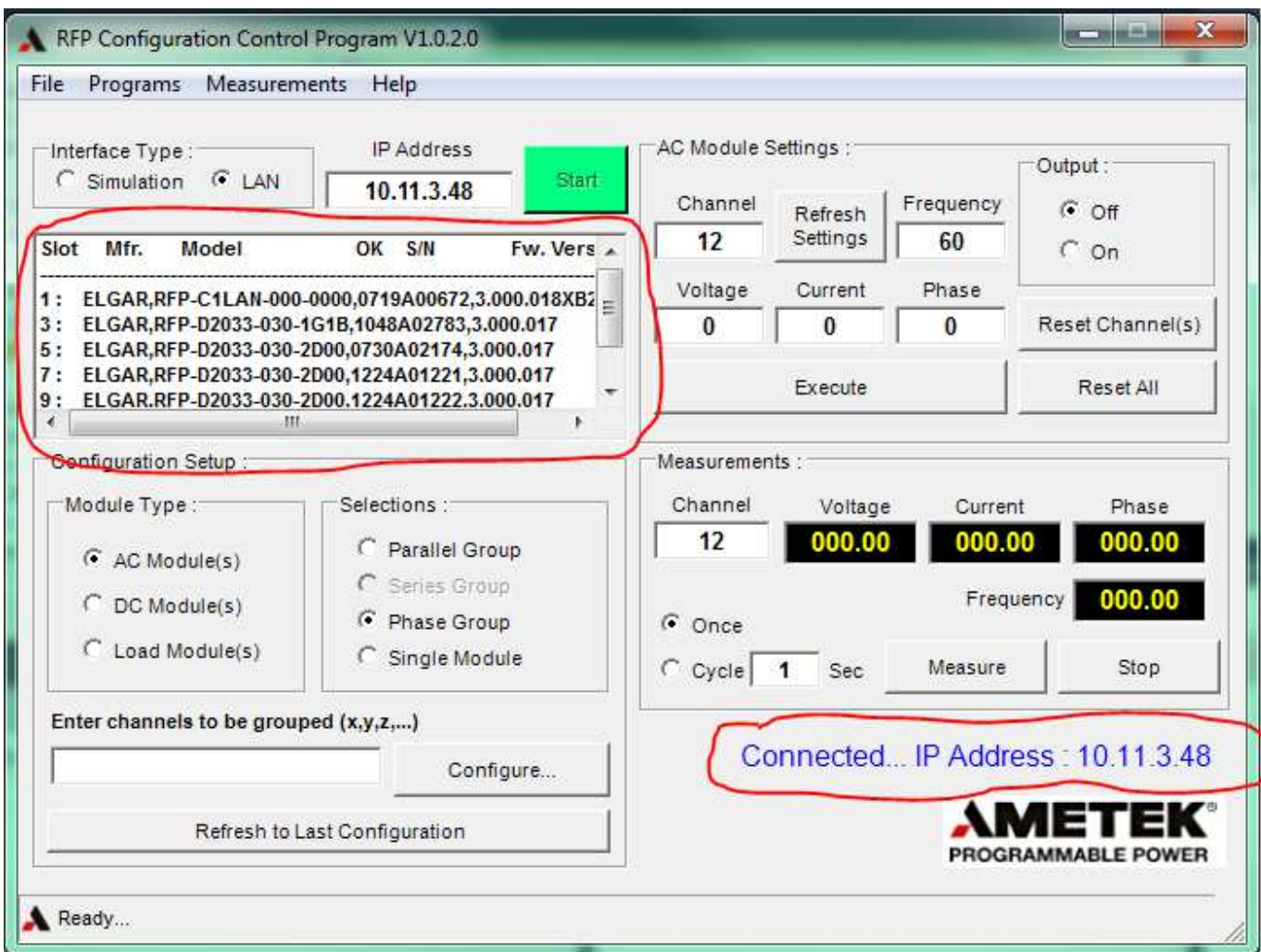


Establish Communication:

1. Under Interface type select LAN and under IP Address enter the IP Address of the RFP system. Click Start.



2. After communication with RFP system has been established all RFP modules connected will appear as well as a “Connected...” message at the bottom right hand corner of the window.



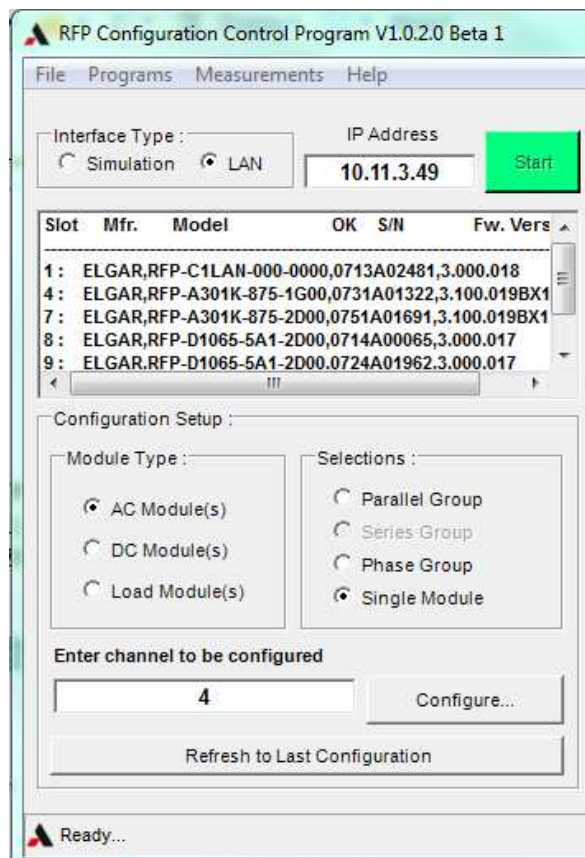
Configure a Single AC module:

1. Under Configuration Setup: Set the following

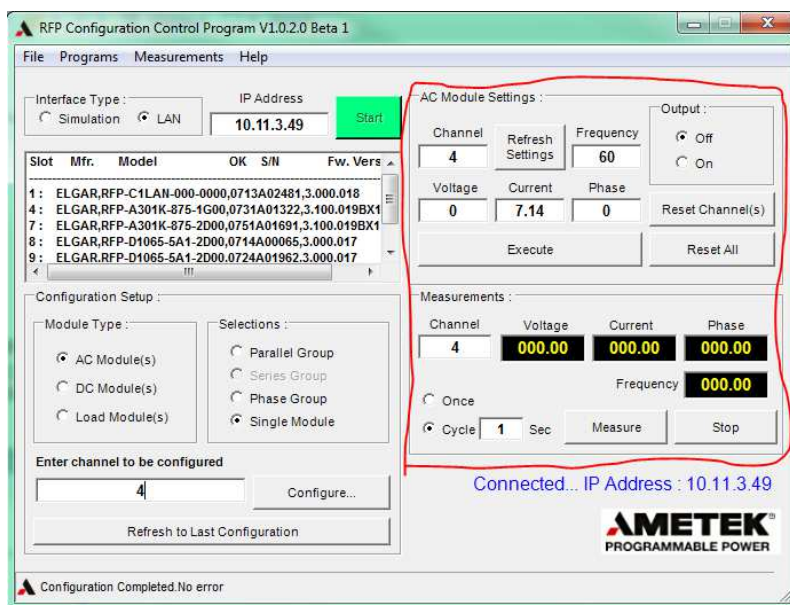
Module Type: AC Module(s)

Selections: Single Module

In the text box “Enter channel to be configured”. Enter the slot number of the AC module to configure. In this example my AC module is 4.



2. Click the “Configure” button. Notice the “AC Module Settings:” and “Measurements:” boxes update to the corresponding AC module configured. In this case channel 4.



3. The AC Module Settings and Measurements: boxes are now accessible.



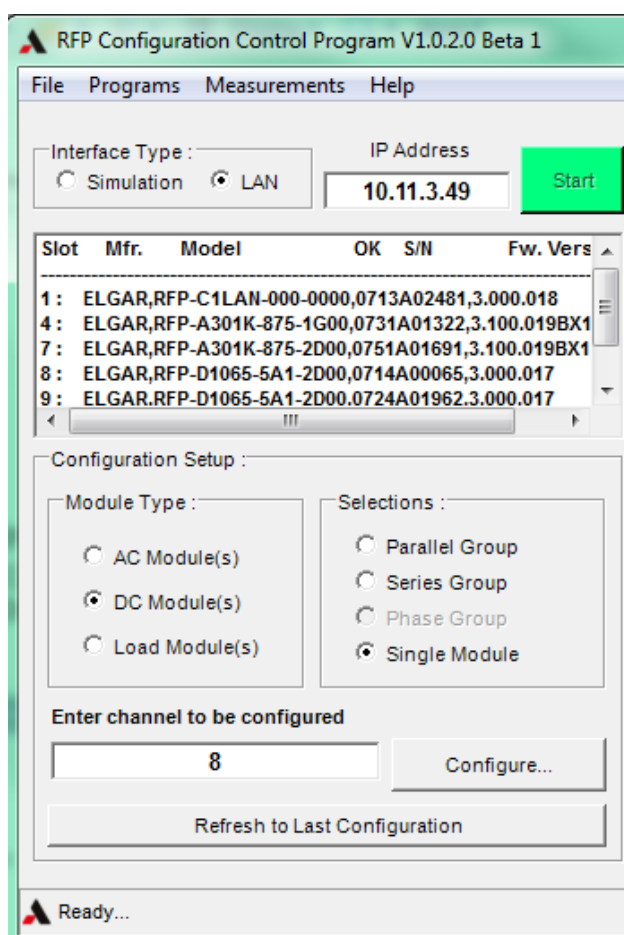
Configure a Single DC module:

1. Under Configuration Setup: Set the following

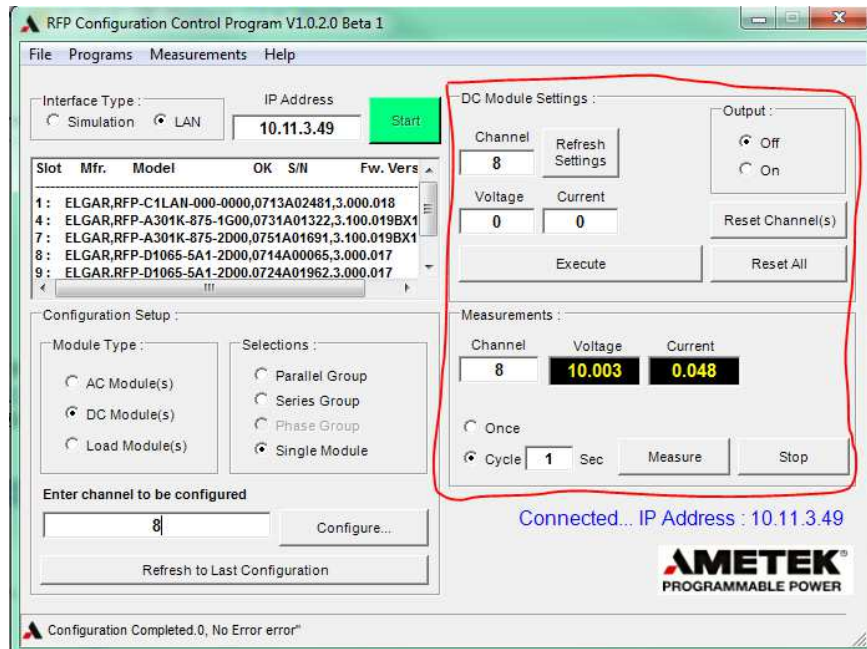
Module Type: DC Module(s)

Selections: Single Module

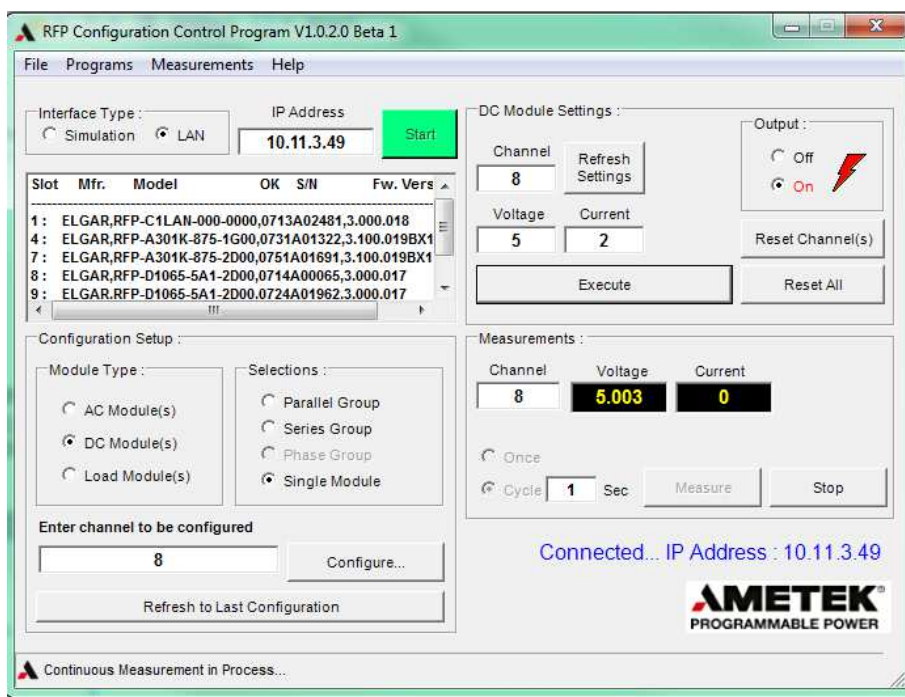
In the text box “Enter channel to be configured”. Enter the slot number of the DC module to configure. In this example my DC module is 8.



2. Click the “Configure” button. Notice the “DC Module Settings:” and “Measurements:” boxes update to the corresponding DC module configured. In this example channel 8.



3. The DC Module Settings and Measurements: boxes are now accessible.

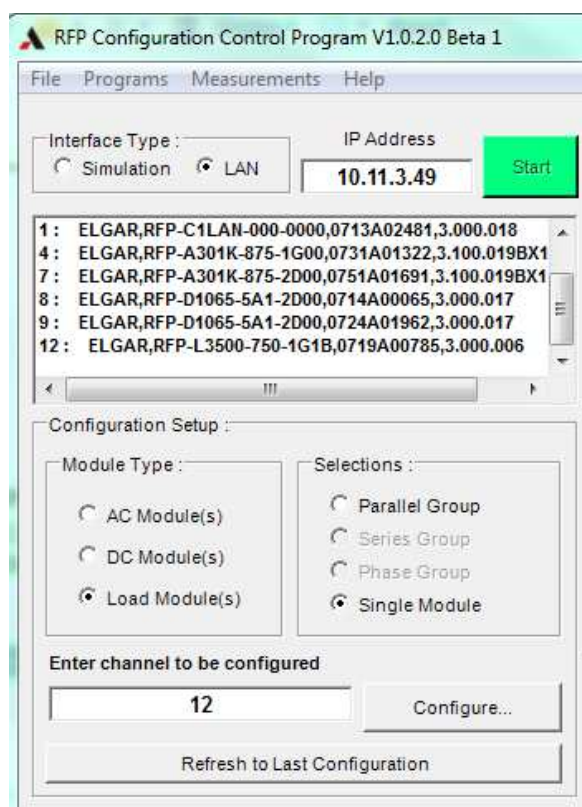


Configure a Single Load module:**1. Under Configuration Setup: Set the following**

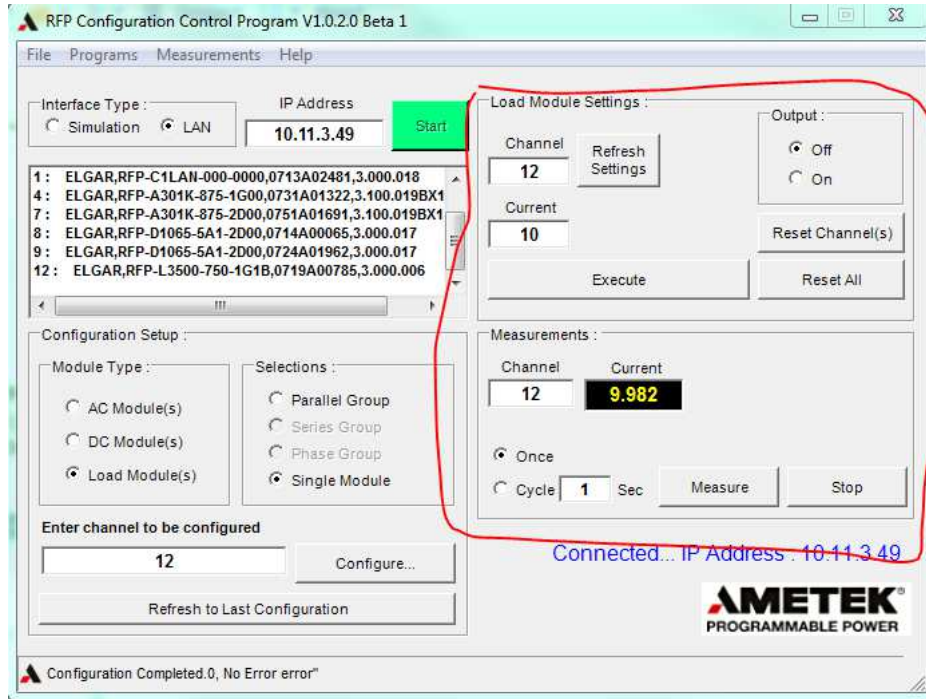
Module Type: Load Module(s)

Selections: Single Module

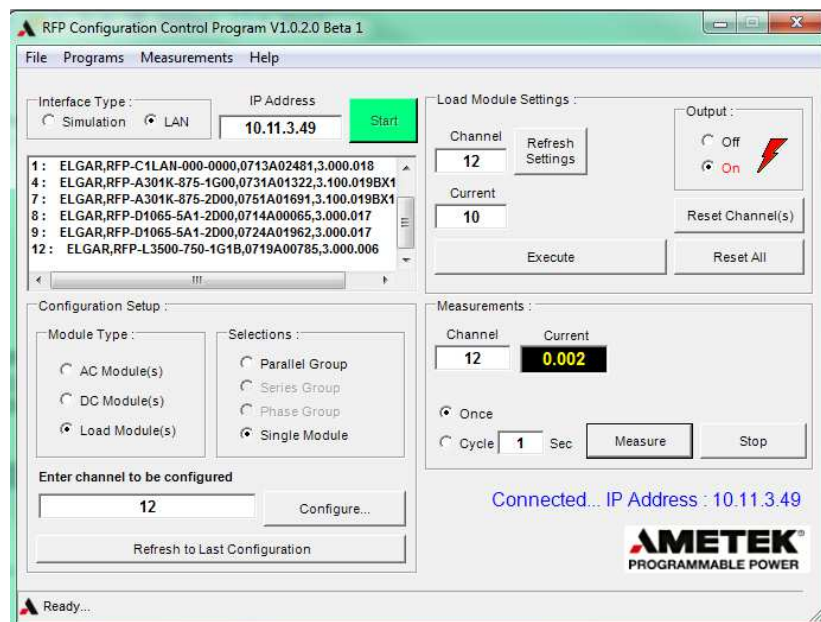
In the text box “Enter channel to be configured”. Enter the slot number of the Load module to configure. In this example my Load module is 12.



2. Click the “Configure” button. Notice the “Load Module Settings:” and “Measurements:” boxes update to the corresponding Load module configured. In this example channel 12.



3. The Load Module Settings and Measurements: boxes are now accessible.



Configure a AC Parallel/Phase Group:

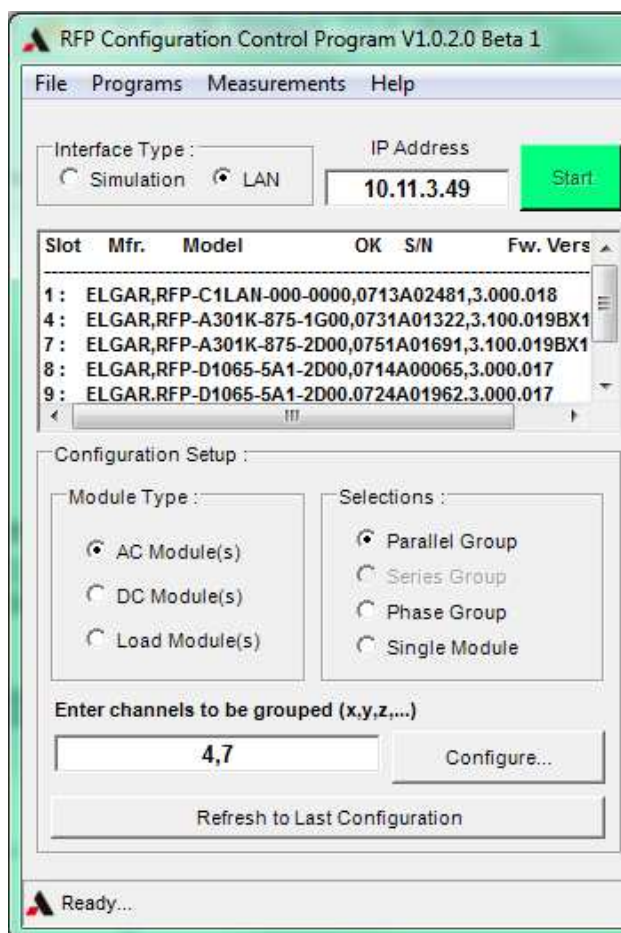
1. Under Configuration Setup: Set the following

Module Type: AC Module(s)

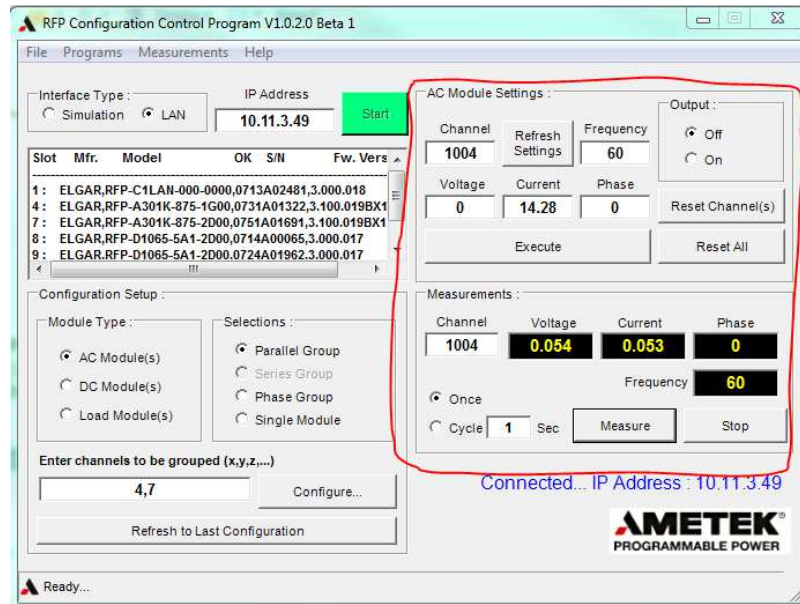
Selections: Parallel/Phase Group

Note: Grouping requires 2 or more modules of the same type

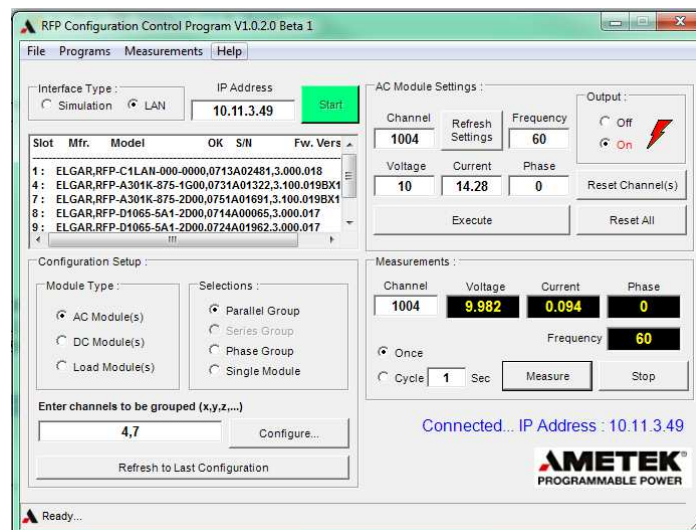
In the text box “Enter channel to be configured (x,y,z,...)”. Enter the slot number of the AC module(s) to configured as a group. In this example I’m putting two AC modules 4 and 7 into a parallel group. In the box I input “4,7”



- Click the "Configure" button. Notice the "AC Module Settings:" and "Measurements:" boxes update to the corresponding AC parallel group configured.



- The AC Module Settings and Measurements: boxes are now accessible.



Configure a DC Parallel/Series Group and Load Parallel Group:

1. Repeat the same steps as setting up a AC Parallel/Phase Group but in this case select DC Modules(s) if setting a DC group and Load Module(s) if setting up a Load group.